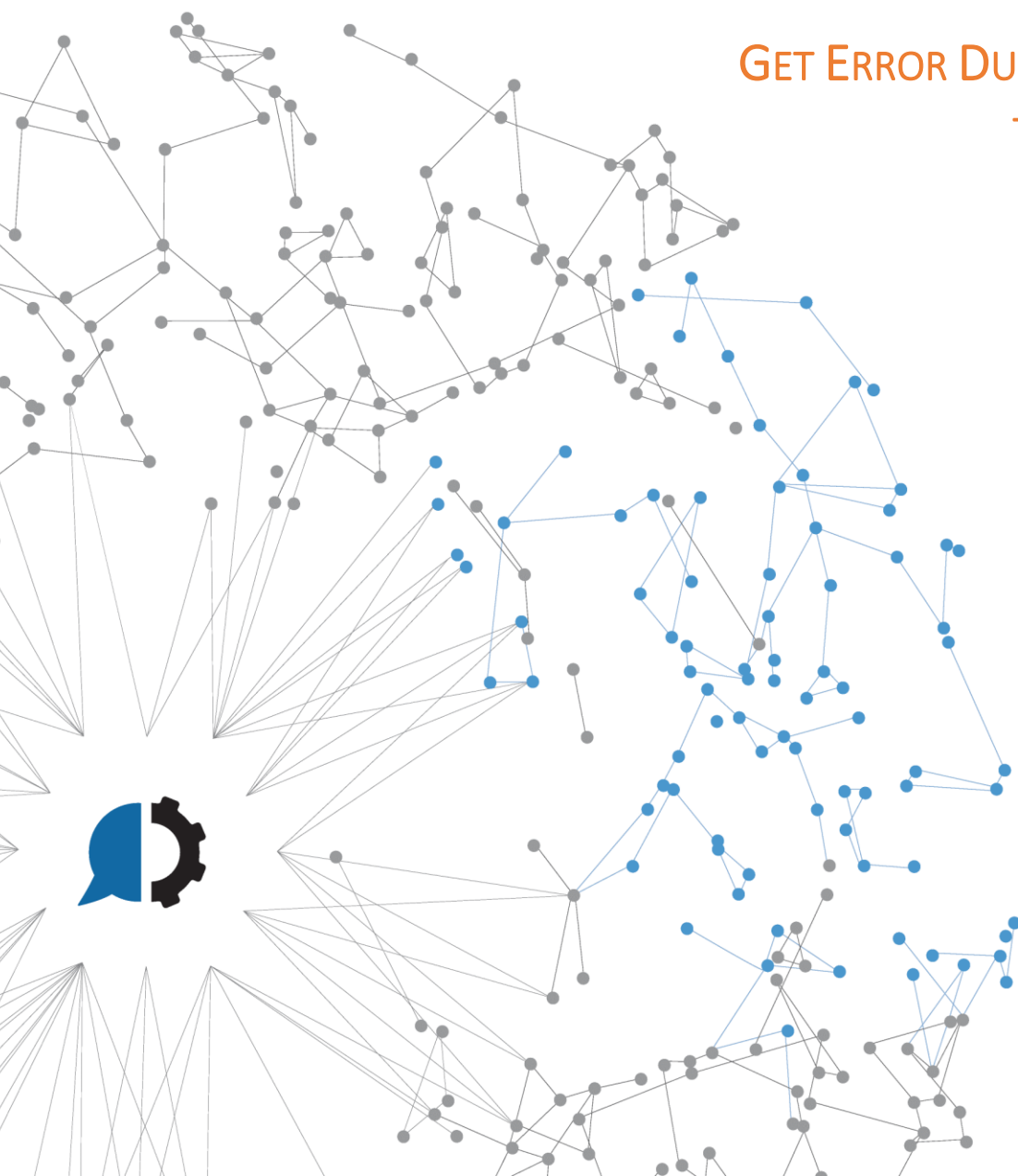




# SAP BOT

GET ERROR DUMPS AND EXPORT  
TO EXCEL (ST22)





## Content

DETAILS.....	3
OVERVIEW .....	4
PREREQUISITES .....	5
HOW TO IMPORT AN AUTOMATE TASK .....	7
HOW TO EXECUTE THE SAP BOT - GET ERROR DUMPS AND EXPORT TO EXCEL (ST22) .....	8
APPENDIX A – SAP TRANSACTION AND EXCEL OUTPUT EXAMPLE.....	10
APPENDIX B - TROUBLESHOOTING .....	11



## DETAILS

### DOCUMENT INFORMATION

AUTHOR	CUSTOMER	CREATION DATE
Helpsystems	<<CLIENT>>	<<DATE>>

### DESCRIPTION

This document provides information to help you understand the implementation, architecture and interfaces for the Automate Enterprise SAP BOT.

### DELIVERY LIST

<<CLIENT>>	<<CONTACT1>> <<CONTACT2>>
HELPSYSTEMS	José Garay  Dario Soria  Sebastian Alvarez

### FILE VERSIONING

VERSION	DATE	AUTHOR	DESCRIPTION
1.0	22/01/2020	José Garay	Initial document



## OVERVIEW

This how to guide introduces the *SAP Bot - Get Error Dumps and Export to Excel (ST22)*. Instead of spending precious time and resources on repetitive, manual tasks, let Automate go to work and streamline your IT and business processes with robotic process automation. With the help of Automate we can take over manual steps which greatly reduces the repetitive activities and improves the quality and consistency of the work. The top processes being automated are reports generation, file movement, data import and export, and scheduling batch processing.

*SAP Bot - Get Error Dumps and Export to Excel (ST22)* executes the SAP Transaction ST22 to get the error dumps list and export the results to an excel file. You will be able to set the next time periods for the list generation: TODAY, YESTERDAY or BACKDAYS before today.

SAP transaction Screen:

Parameters

Standard

<input type="button" value="Today"/>	0	Runtime Errors
<input type="button" value="Yesterday"/>	0	Runtime Errors

Own selection

Date	22.01.2020	to	<input type="text"/>	<input type="button" value="📅"/>	<input type="button" value="➡"/>
Time	00:00:00	to	00:00:00	<input type="button" value="🕒"/>	<input type="button" value="➡"/>
Host	<input type="text"/>	to	<input type="text"/>	<input type="button" value="📄"/>	<input type="button" value="➡"/>
Work Process Index	<input type="text"/>	to	<input type="text"/>	<input type="button" value="📄"/>	<input type="button" value="➡"/>
User	SSPP	to	<input type="text"/>	<input type="button" value="📄"/>	<input type="button" value="➡"/>
Client	<input type="text"/>	to	<input type="text"/>	<input type="button" value="📄"/>	<input type="button" value="➡"/>
To be stored	<input type="text"/>	to	<input type="text"/>	<input type="button" value="📄"/>	<input type="button" value="➡"/>
Runtime Error	<input type="text"/>	to	<input type="text"/>	<input type="button" value="📄"/>	<input type="button" value="➡"/>
Canceled Program	<input type="text"/>	to	<input type="text"/>	<input type="button" value="📄"/>	<input type="button" value="➡"/>
Exception	<input type="text"/>	to	<input type="text"/>	<input type="button" value="📄"/>	<input type="button" value="➡"/>
Transaction ID	<input type="text"/>	to	<input type="text"/>	<input type="button" value="📄"/>	<input type="button" value="➡"/>
EPP Full Context ID	<input type="text"/>	to	<input type="text"/>	<input type="button" value="📄"/>	<input type="button" value="➡"/>
EPP Connection ID	<input type="text"/>	to	<input type="text"/>	<input type="button" value="📄"/>	<input type="button" value="➡"/>

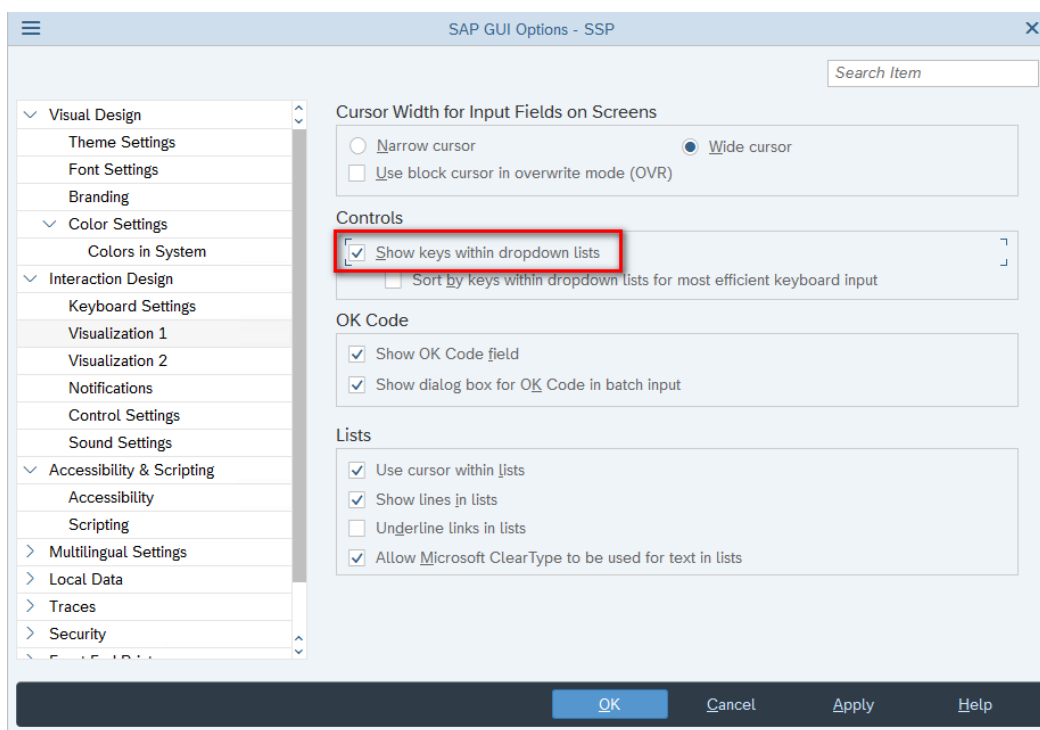
These files were investigated for each runtime error:

- ☐ With Short Text of Runtime Error
- ☐ Corresponding Application Component (Long Runtime)
- ☐ Use old dump analysis



## PREREQUISITES

- **Automate:** The SAP BOT depends on Automate software in order to work. The minimal supported versions are:
  - Automate Ultimate 11.2
  - Automate Plus 11.2
  - Automate Desktop 11.2
- **Automate Markup Language file (.AML):** The primary file type used in Automate which contains the steps of our SAP BOT task
- **SAP Client:** Our minimal requirements are
  - SAP Logon 760
  - Show keys within dropdown lists enabled

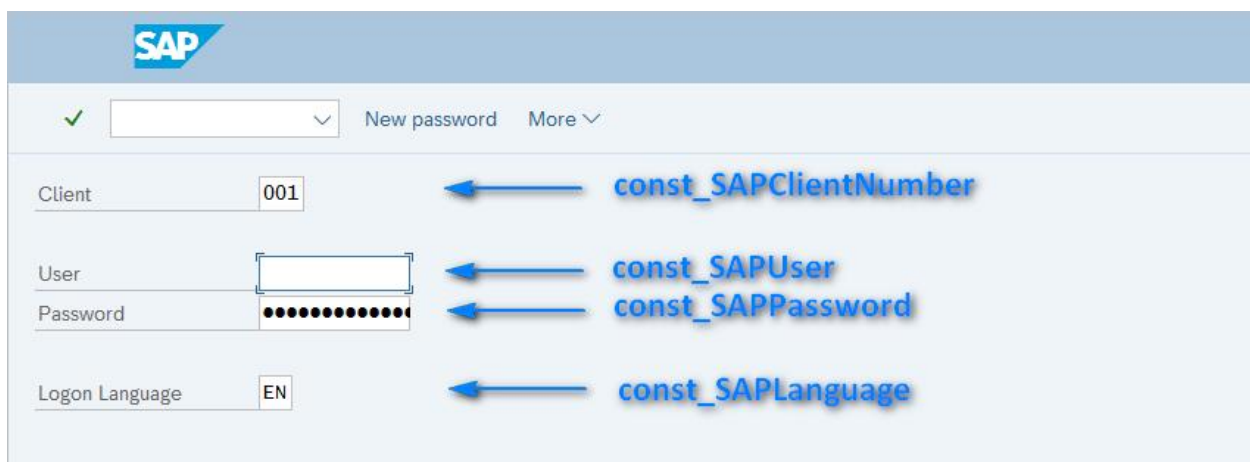
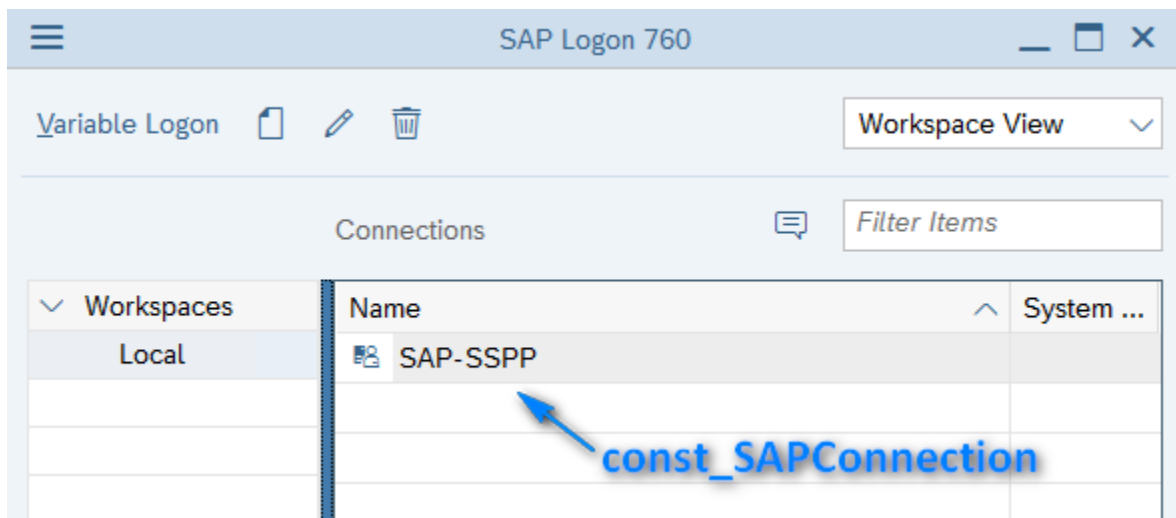


- A user with enough privileges to run the XD01 transaction

To check if you have the required level of authorization to run this and any transaction use SU53. Simply execute ST22 and then execute /NSU53 immediately afterwards. A report of all authorizations checked will then be displayed



- Automate constants for connection and SAP Login:
  - `const_SAPClientNumber`: SAP Client Number. By Default: 001
  - `const_SAPConnection`: SAP Login connection name
  - `const_SAPLanguage`: SAP Language. By Default: EN
  - `const_SapLogonPath`: SAP executable path. By Default: C:\Program Files (x86)\SAP\FrontEnd\SapGui\saplogon.exe
  - `const_SAPPassword`: SAP Login Password
  - `const_SAPUser`: SAP Login Username



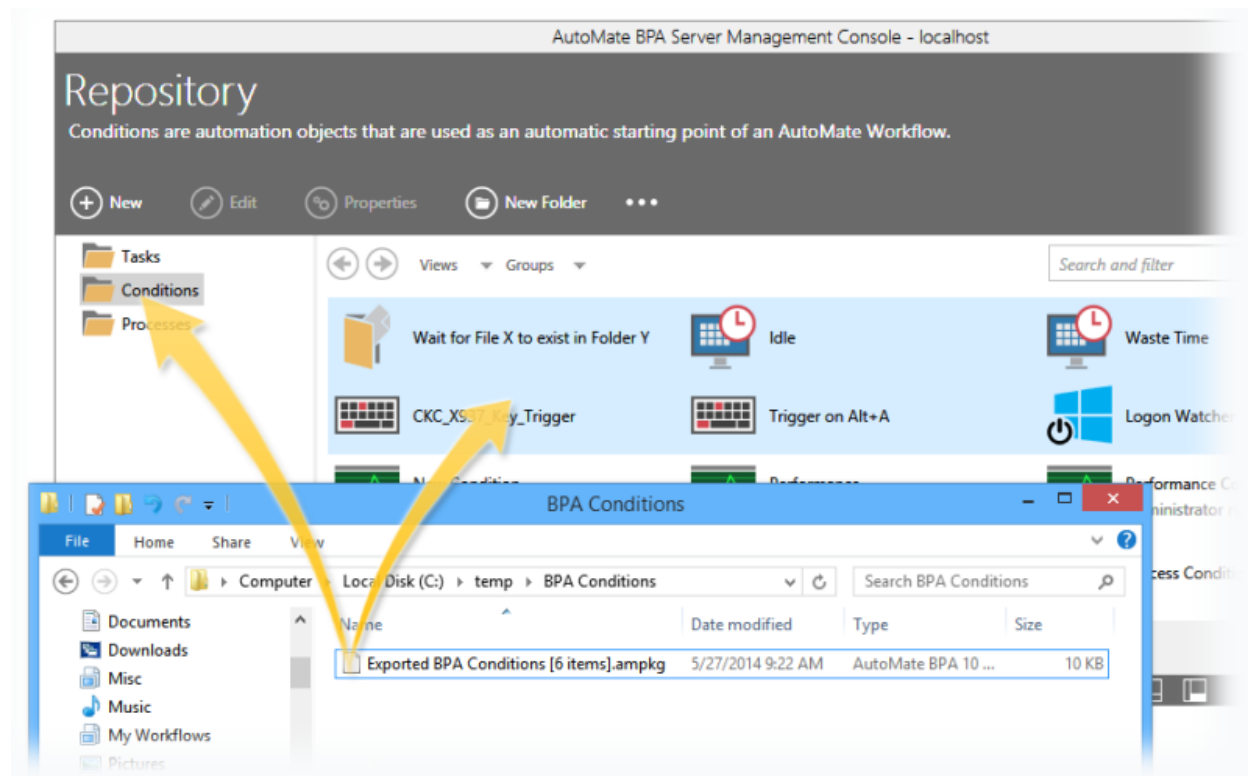


## HOW TO IMPORT AN AUTOMATE TASK

Compatible file types can be imported to the repository via drag-and-drop

From the [Server Management Console](#), navigate to the Repository section

Drag the desired file(s) from its original location and drop them into the folder in the [SMC](#). Files can be dropped into the folder icon or the main panel (as shown below). Imported object(s) are automatically placed into their corresponding repository location.



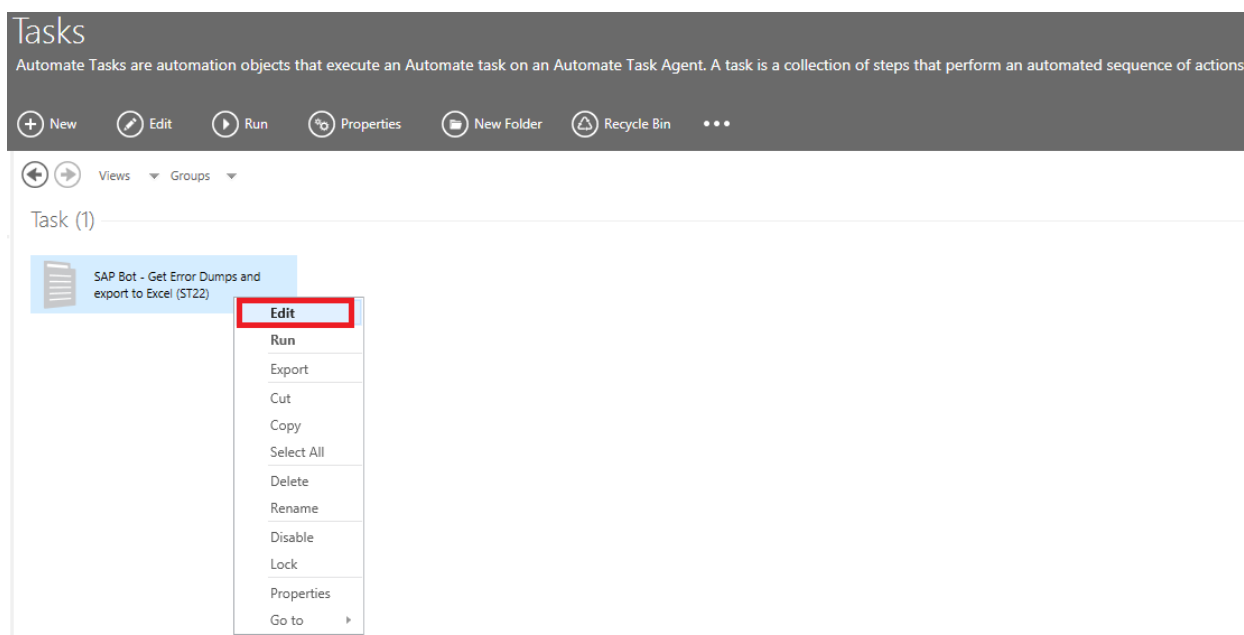


## HOW TO EXECUTE THE SAP BOT - GET ERROR DUMPS AND EXPORT TO EXCEL (ST22)

If this is the first time running this task, we will need to set some parameters

Open the [Server Management Console](#) and locate the imported task

Edit the imported task by right clicking on the task and selecting [edit](#)



From [step 2](#) edit the next variables according to you desired output:

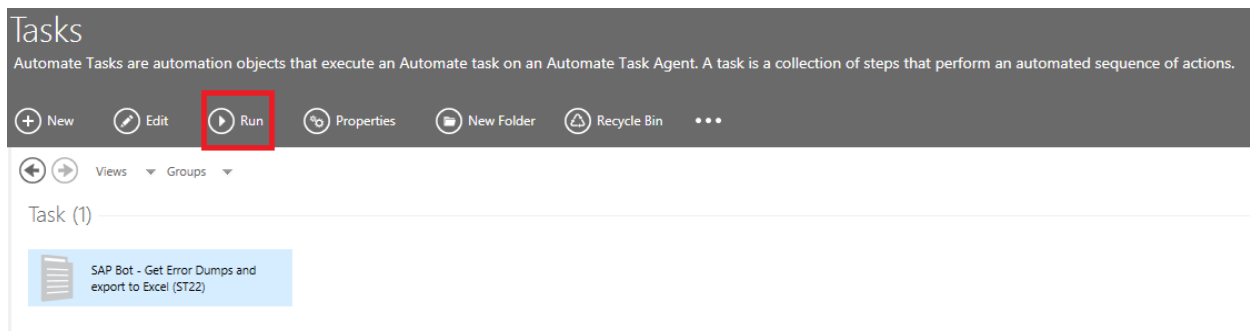
- [var\\_Interval](#): Period for resulting list. It can be set to:
  - **TODAY**
  - **YESTERDAY**
  - **BACKDAYSNUMBER** (Quantity of back days before today)
- [var\\_BackDays](#): When selecting BACKDAYSNUMBER in the before variable, set the number of back days to calculate the FROM date for generation.
- [var\\_FilePath](#): location of the output excel file.
- [var\\_FileName](#): Name of the resulting excel file with the list of error dumps.

[Save and close](#) the task

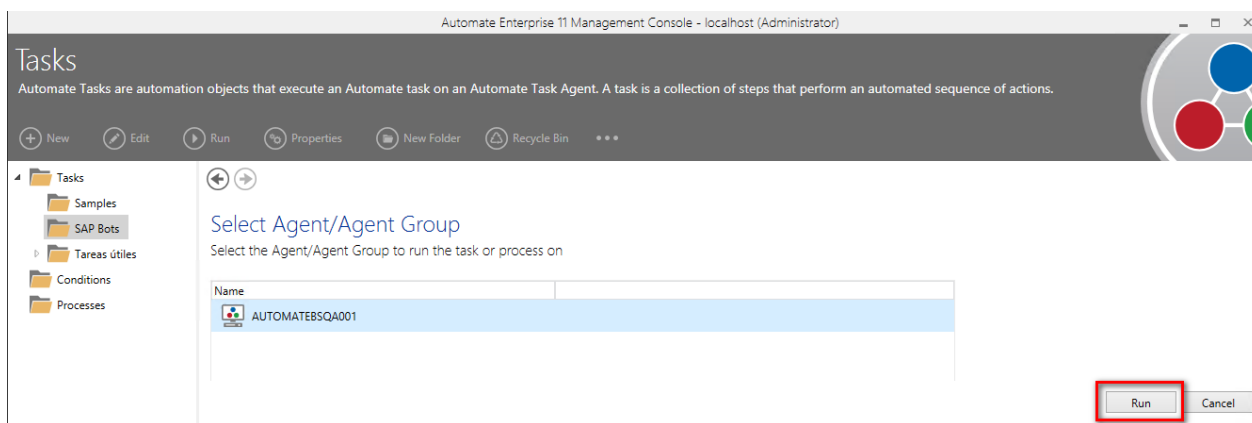




Select the task and click on [Run](#)



Select your [Agent](#) and click on [Run](#) again





## APPENDIX A – SAP TRANSACTION AND EXCEL OUTPUT EXAMPLE

SAP:

Runtime Errors									
Current Date	Time	Application Server	User	Client	Runtime Error	Exception	Canceled Program	WP Index	Transaction ID
16.10.2019	10:24:39	SAP-SSPP_SSP_00	SSPP	001	C DBSQL_ALLOCATION_FAILED		SAPLSADR	5	EC0F4923070A0050E005DA69D4299A17

Resulting Excel file:

SAPErrorDumpsList.xlsx - Excel											
File Home Insert Page Layout Formulas Data Review View Developer Help Team Tell me what you want to do											
A2											
A	B	C	D	E	F	G	H	I	J	K	L
Current Date	Time	Application Server	User	Client ID	Keep	Runtime Error	Exception	Program Name	Index of Work Process	Transaction ID	
16/10/2019	10:24:39 AM	SAP-SSPP_SSP_00	SSPP	001	C	DBSQL_ALLOCATION_FAILED		SAPLSADR	5	EC0F4923070A0050E005DA69D4299A17	



## APPENDIX B - TROUBLESHOOTING

- Logs: Each iteration of our BOT creates a Log file for troubleshooting. You can locate the log file under C:\AutoMate\Tasks\<<TASK NAME>>. By Default, the task name is *SAP Bot - Get Error Dumps and export to Excel (ST22)*.



### About HelpSystems

Organizations around the world rely on HelpSystems to make IT lives easier and keep business running smoothly. Our software and services monitor and automate processes, encrypt and secure data, and provide easy access to the information people